

SPECIFICATION OF SURFACE MOUNT TYPE

1 .TYPE	DSX211G				
2 .NOMINAL FREQUENCY	26.000000	MHz			
3 .LOAD CAPACITANCE(CL)	8.0	pF			
4 .DRIVE LEVEL	10	μW	+/- 2	μW	
5 .FREQUENCY TOLERANCE	+/- 10	x 10 ⁻⁶		at 25 deg.C +/- 3 deg.C	
6 .SERIES RESISTANCE	150	ohms	max. / CL = SERIES		
7 .FREQUENCY CHARACTERISTICS OVER TEMPERATURE(ref. +25 deg.C)	+/- 20	x 10 ⁻⁶		/ -40 deg.C to +85 deg.C	
8 .OPERATING TEMPERATURE RANGE	-40	deg.C	to		+85 deg.C
9 .STORAGE TEMPERATURE RANGE	-40	deg.C	to		+85 deg.C
10 .SHUNT CAPACITANCE(C0)	2.0	pF	max.		
11 .INSULATION RESISTANCE	500 Mohms min. at 100V DC				
12 .OVERTONE ORDER	Fundamental				
13 .DIMENSIONS	Refer to Fig-1				
14 .PART NUMBER	257609				

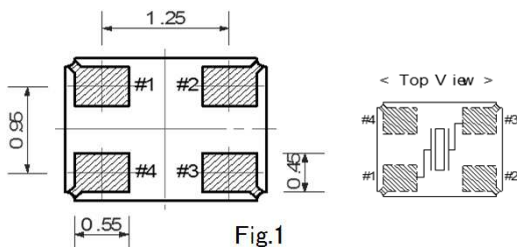
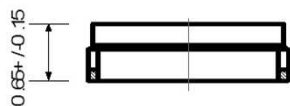
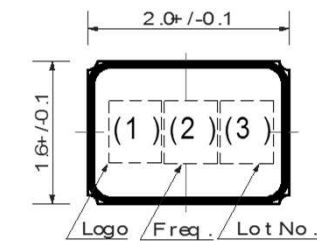


Fig.1

(1)Logo, (2)Frequency and Manufacturing Location

Producing District	(1)Logo	(2)Frequency
INDONESIA	D	26

* Made in INDONESIA : Under Bar with (1)Logo

(3)Lot No.

unit : mm
Tolerance : +/-0.1

Pin #1 #3 connected quartz element
Pin #2 #4 is not connected with anything.