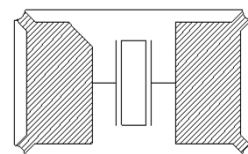
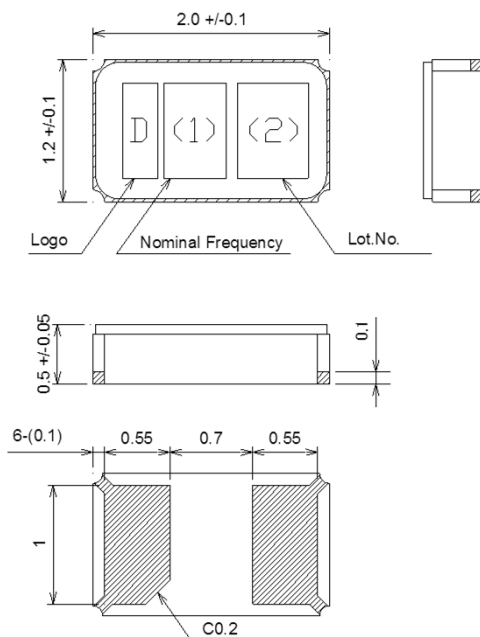


SPECIFICATION OF SURFACE MOUNT TYPE

1 .TYPE	DST210AC	(AEC-Q200 Qualified)
2 .NOMINAL FREQUENCY	32.768	kHz
3 .OVERTONE ORDER	Fundamental	
4 .LOAD CAPACITANCE(CL)	12.5	pF
5 .FREQUENCY TOLERANCE	$\pm 20 \times 10^{-6}$	(at $25 \pm 3^{\circ}\text{C}$ )
6 .DRIVE LEVEL	0.1	$\mu\text{W} \pm 20\%$ (0.5 $\mu\text{W}$ max.)
7 .SERIES RESISTANCE	80	k $\Omega$ max. (at CL=Series)
8 .TURNOVER TEMPERATURE	+25	$\pm 5^{\circ}\text{C}$
9 .PARABOLIC COEFFICIENT	$-0.04 \times 10^{-6}$	/ $^{\circ}\text{C}^2$ max.
10 .OPERATING TEMPERATURE RANGE	-40	~ +85 $^{\circ}\text{C}$
11 .STORAGE TEMPERATURE RANGE	-40	~ +85 $^{\circ}\text{C}$
12 .SHUNT CAPACITANCE(C0)	1.3	pF typ.
13 .INSULATION RESISTANCE	500	M $\Omega$ min. (at DC 100 $\pm$ 15V)
14 .TAPING	3000	pcs/reel
15 .PART NUMBER	266457	
16 .DIMENSIONS	Refer to Fig-1	<Top View>



D : manufacturer's code  
 (1) : Nominal Frequency "A" as 32.768kHz  
 (2) : Lot. No.

Fig.-1